


SERENA BOCCHINO



CLASH BLAST 2016 enamel paint and mirrors on canvas 52x72 inches

COVER IMAGE

A large, elegant, handwritten signature in black ink that reads "Serena Bocchino". The script is fluid and cursive, with the first letter 'S' being particularly large and stylized.

About the Exhibition:

Inspired by movement, rhythm and the spiritual aspects of music, Serena Bocchino's abstract paintings evoke the chaotic harmony that can be found in the lyrical and sonic elements of jazz. A metaphorical schema of sound depicted in various hues and lines, Bocchino's works are often accented with elements of gold leaf, ceramic, or reflective mirrors to greater emphasize the dynamism of the exact moment in time that she envisions. This exhibition features a curated composition of boldly colored large-scale canvases from Bocchino's Sky Slam and Mirror series.

To create her larger than life paintings, Bocchino employs a pouring method using crushed cans of enamel paint and a variety of sticks and brushes for smaller details. This method requires a conscious exactness, demanding careful planning in advance of adding any paint or other materials to the surface. Echoing the lyrical movement of her finished works, Bocchino paints in large, seemingly choreographed motions. The physicality of this type of painting is essential to her investigation and the outcome of the final work. With each mark and pour defining the next, the sequential nature of the multifarious hues and tones creates the structure of each composition. This layering progression of drawing, pouring, and embellishing is a crucial and defining characteristic in all of Bocchino's works.

About the Artist:

Born in Englewood, New Jersey, artist Serena Bocchino has been recognized for her work worldwide. Bocchino has an MA in painting from New York University, and has received recognition from many institutions, including fellowship grants awarded by the Pollock-Krasner Foundation, MoMA PS 1 International Studio Residency, The New Jersey State Council on the Arts, and the Rutgers Center for Innovative Print and Paper. Having recently returned from an international exhibition at the Taoxichuan Art Museum of China Central Academy of Fine Art, Bocchino is currently engaged in a residency at the Eileen Kaminsky Family Foundation at MANA Contemporary Art in Jersey City, NJ for the fall of 2017. Bocchino's work is represented in public, private, and corporate collections around the world.

Stacey Hecht
Arts Exhibition Coordinator

SYNCHRONOUS HUG 2015 enamel paint and mirrors on canvas
60 x 80 inches



TORCH (sky slam series) 2016 enamel paint and mirrors on canvas
32 x 42 inches



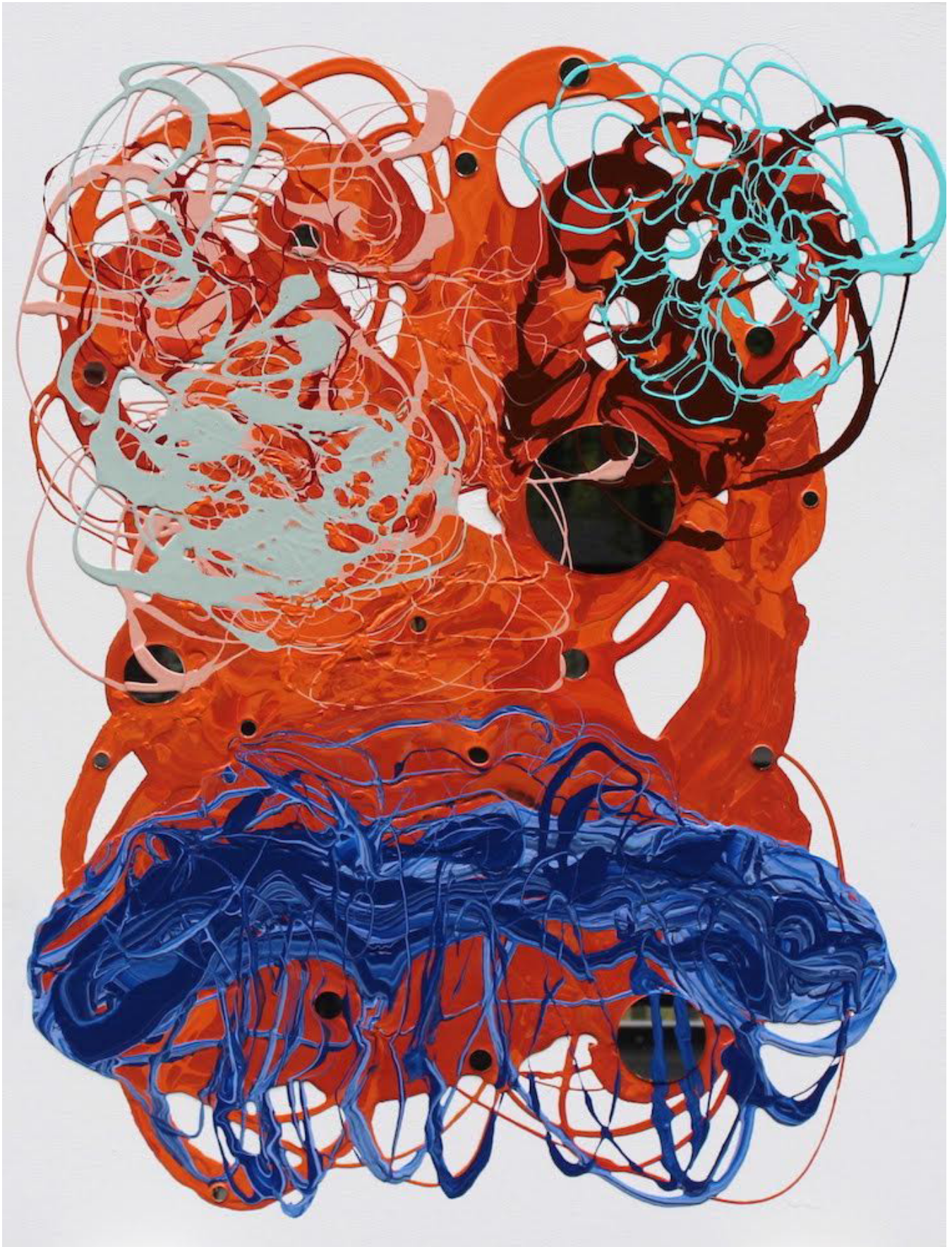
SURFBOARD (sky slam series) 2016 enamel paint and mirrors on canvas
42 x 52 inches



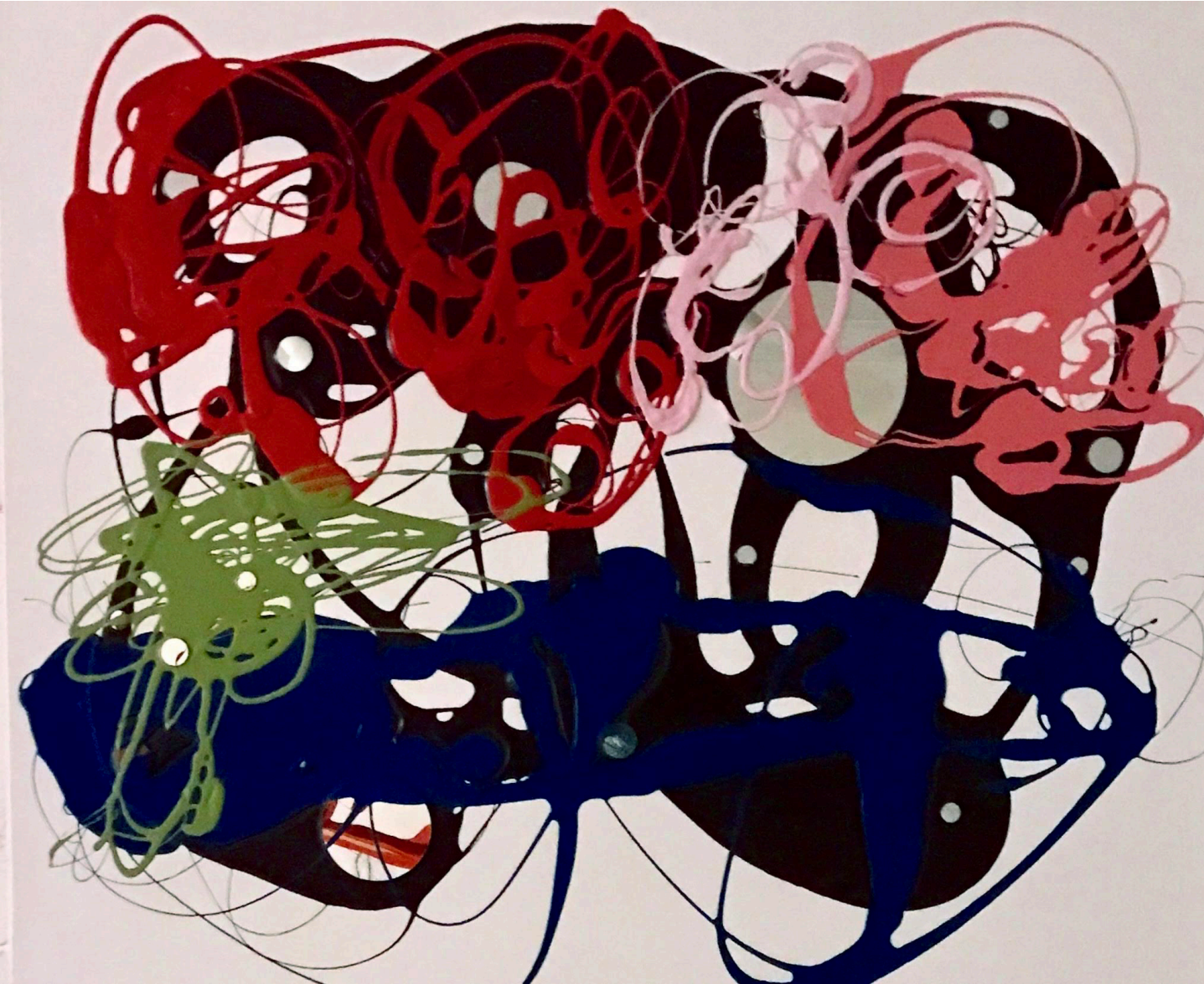
SOMETIMES (sky slam series) 2015 Enamel paint and mirrors on canvas
28 x 34 inches



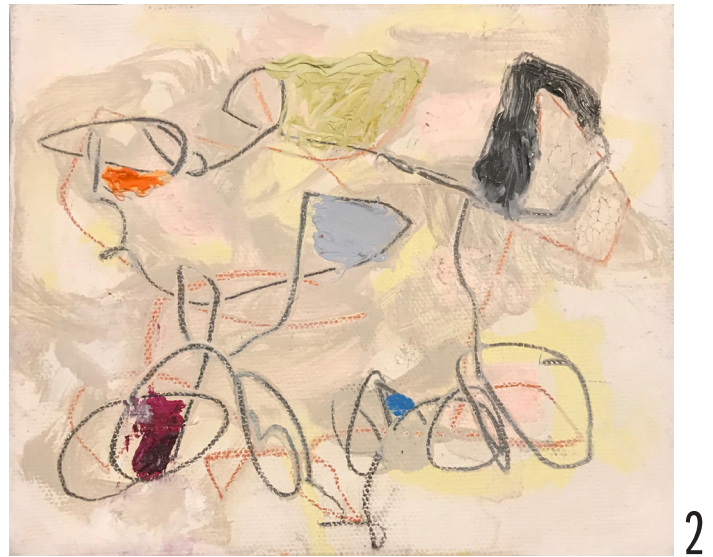
BLUE CROSSING ORANGE (sky slam series) 2016 enamel paint and mirrors on canvas
42 x 32 inches



BACK AT YOU (mirror series) 2015 enamel paint and mirrors on canvas
28 x 34 inches



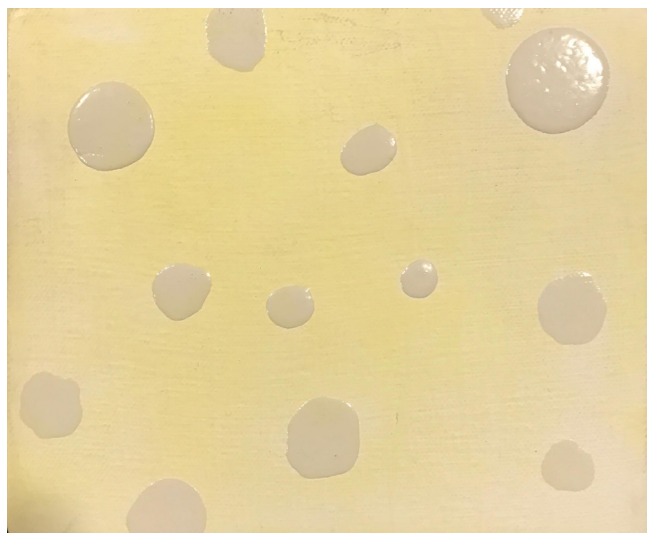
1. **SWEEP** 1999 oil and graphite on canvas 5 x 6 inches
2. **ELECTRIC WAVES** 2004 enamel paint on canvas 5x 6 inches
3. **DETOUR** 2002 enamel and oil paint on canvas 5x5 inches
4. **DIRECTION** 1998 oil and graphite on canvas 5 x 6 inches
5. **UP CLOSE** 2002 enamel paint on canvas 5x 6 inches



6. **WAVES OF DELIGHT** 2001 enamel and oil paint on canvas 5x6 inches
7. **WHISPER** 1999 oil and graphite on canvas 5 x 6 inches
8. **DELIGHTFUL** 1991 enamel paint and graphite on canvas 5 x 5 inches
9. **MARIMBA** 1999 enamel paint on canvas 5x 6 inches
10. **ROCK AND ROLL** enamel paint on canvas 5 x 6 inches



18



Artist Statement:

My work as a whole acts as a metaphorical schema of sound depicted in various hues and lines, often with embellishments to greater emphasize the movement and moment in time that I envision.

I employ a pouring method using crushed cans filled with enamel paint and a variety of sticks and brushes to pour and drizzle paint in order to generate lyrical movement. I apply fragments of mirrors, canvas strips, metal leafing, and other adhesions to the canvas to emphasize areas of the composition. These areas create a transparent, interrupted, or reflective surface as a point of departure on which to begin painting.

The physicality of this type of painting is essential to my investigation. I create my work in layers: each mark and pour defines the next, and maintains the basic qualities of abstraction. The sequential nature of the multifarious hues and tones creates the structure of each composition. Each element of a work acts as almost an instrument in a composition, contrasting or complimenting the next mark or pour. This layering progression of drawing, pouring, wiring and embellishing is key to all of my work.

American artist, Serena Bocchino has been recognized by many art institutions for her work and is the recipient of numerous awards including the Pollock-Krasner Foundation Grant, the PS 1 International Studio Residency, the Artists Space/Artists Grant, the Art Matters Grant, the Brodsky Center Printmaking Residency and the Basil Alkazzi Award, USA. The New Jersey State Council on the Arts has granted her Fellowships in both Painting and Drawing.

The Museum of Modern Art in New York featured Bocchino's paintings and methodology in a film documentary by Monica Scharf . From 1989–2013 Bocchino's work has been the subject of six films.

Bocchino's exhibitions have received critical attention from The New York Times, The New Yorker, Artnews, Art in America, Newsday the San Francisco Art Examiner, ArtCritical, On Verge magazine and the Star Ledger. In 2015, her first monograph was released written by Lisa A. Banner, Jonathan Goodman and Lily Zhang.

Serena Bocchino is just back from an exhibition at the Taoxichuan Art Museum of China Central Academy of Fine Arts. She will be at a residency at the Eileen Kaminsky Family Foundation (ES-KFF) at MANA Contemporary Art in Jersey City NJ in the Fall 2017.

Public Collections that her work is included:

Art in Embassies Program, Bergen Museum of Art and Science, Bronx Museum of the Arts, Fidelity Investments, Islip Art Museum, Janssen Pharmaceuticals, Lotus Museum, Beijing China, McKinsey & Co. Incorporated, Moelis International, Montclair Art Museum, Morris Museum, Newark Public Library, New Jersey State Council on the Arts, Noyes Museum, Pfizer Inc, Price, Waterhouse and Coopers, Saks Fifth Avenue, New York, NY, Smithsonian Museum, Irma and Bill Seitz Collection, Washington D.C., Springfield Museum of Art, St. Louis Art Museum, The Prudential, The Brodsky Center, Rutgers University, Trenton State Museum, the Taoxichuan Art Museum of China Central Academy of Fine Arts and The Zimmerli Art Museum.

Special thanks to Johnson & Johnson
Stacey Hecht, Exhibition Coordinator
Hayley Reina, Graphic Designer

All images © 2017 Serena Bocchino



Johnson & Johnson